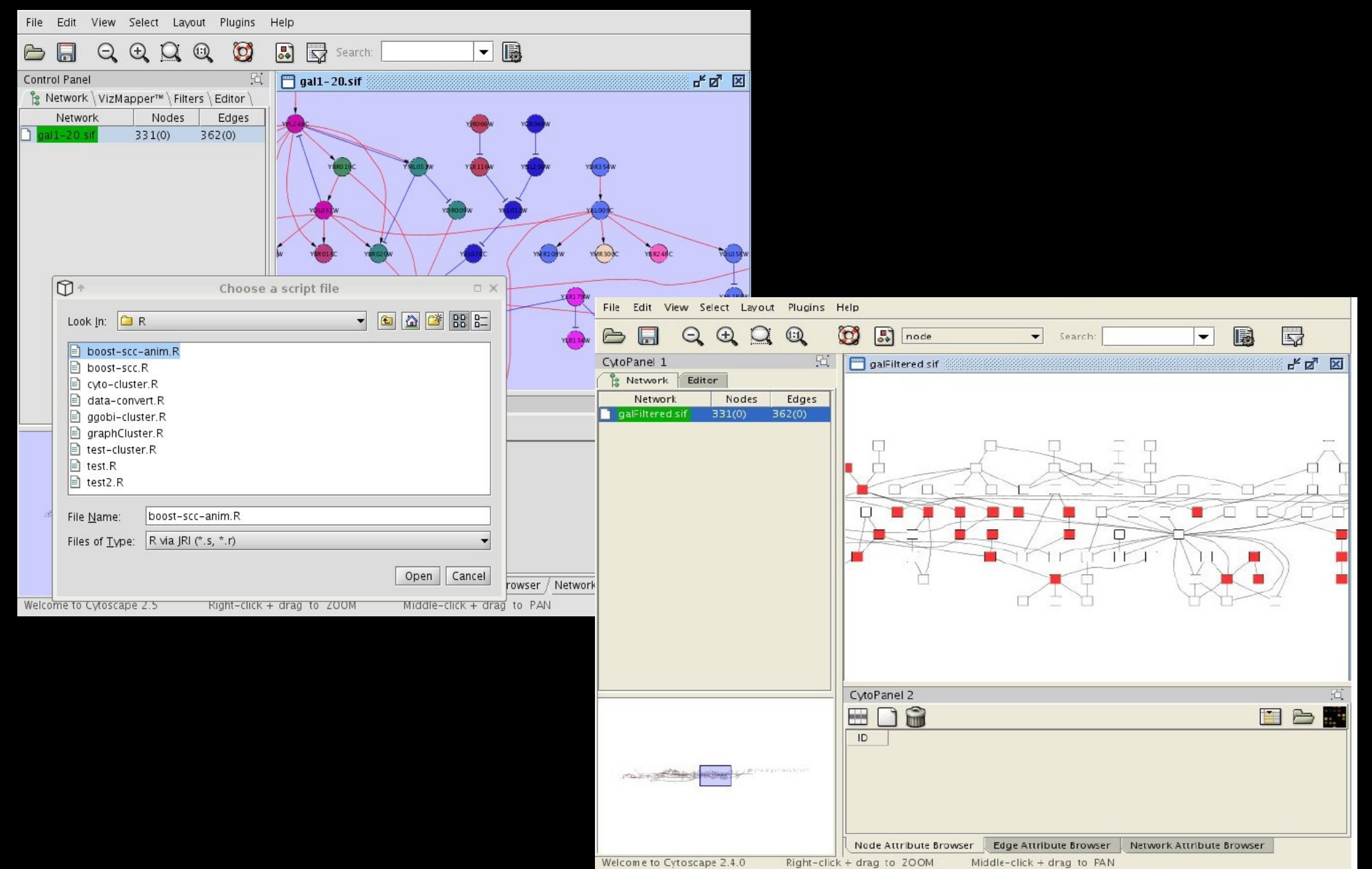
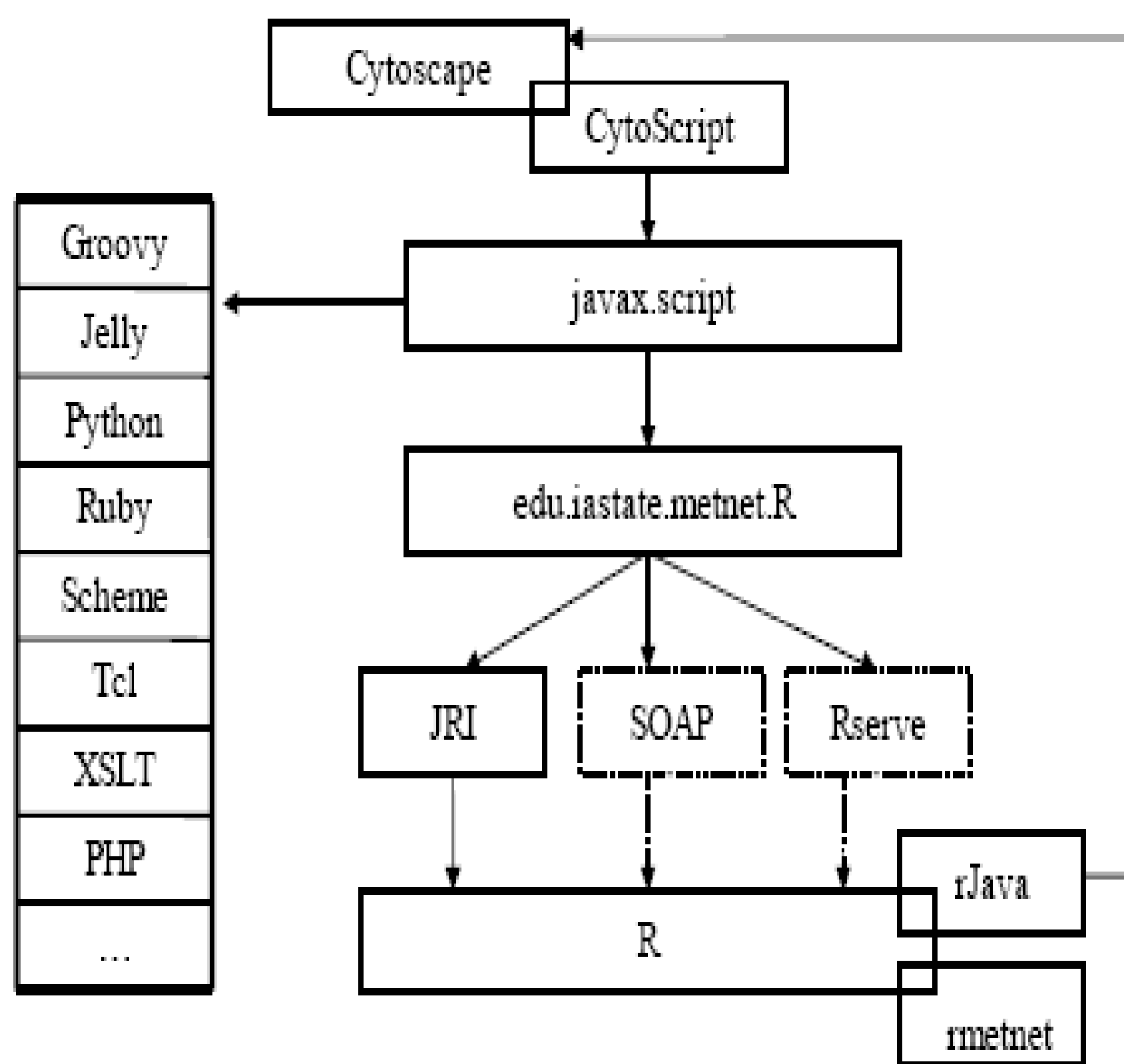


CytoScript

Running scripts in Cytoscape

Goal : to extend Cytoscape through scripts, with the target application being the analysis of network or experimental data. The results of the analysis are represented in Cytoscape network view.

System Design for R



provide the convenient functionality for linking R to the MetNet platform

```
network <- as(getCyNetworkAsGraph(), "graphNEL")  
df <- t(getExpressionData())
```

Visualization of analysis results (Mapping Rules)

> type attribute-test -> appearance

attribute-name operator attribute-value

{=, <, >}

property-name = property-value

the name of an attribute in Cytoscape

node expression > 3 -> fill color = 0,0,255